




BTE
BETTER HOLDING



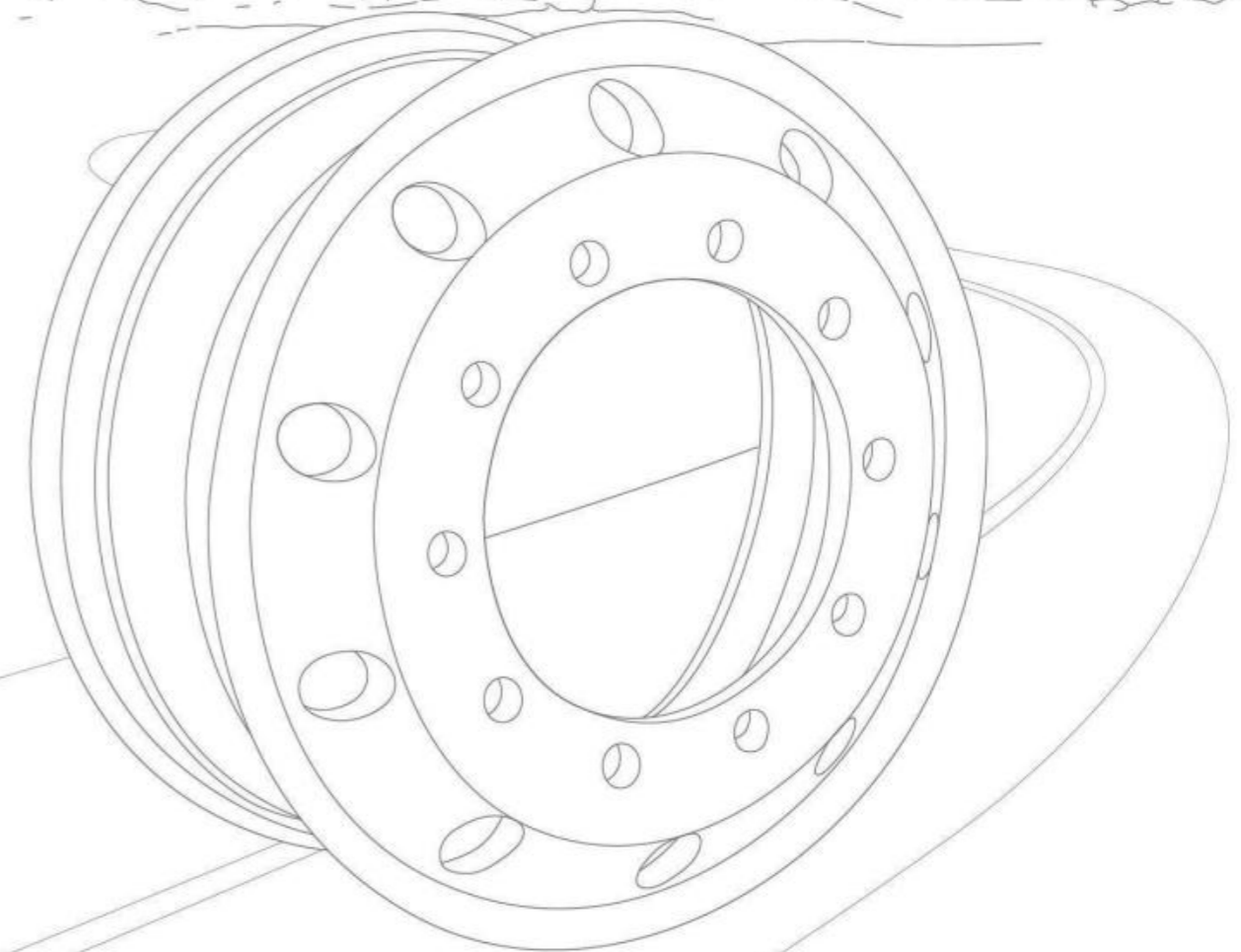
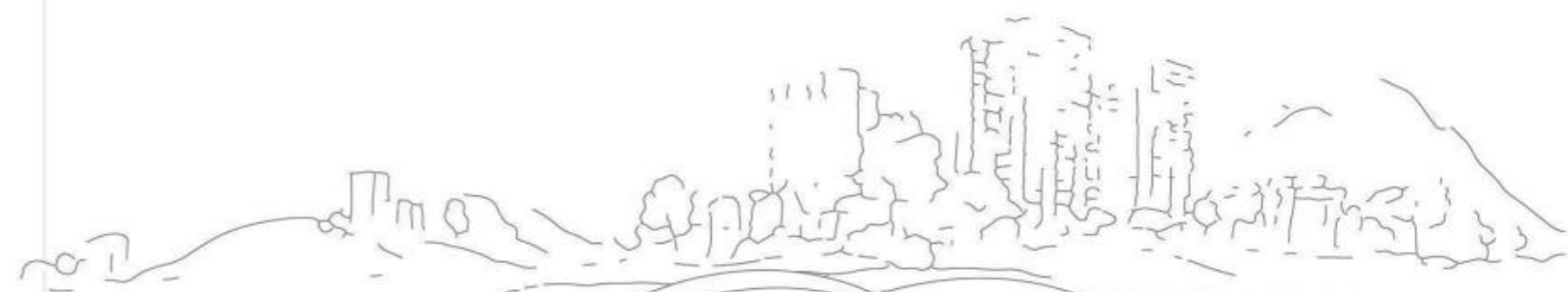
 No. 299 Fenghuangshan Road, West Coast New Area,

Qingdao, China. 266400

 +86-532-83978005

 +86-13969890563 (WhatsApp)

 www.hktyres.com



PRODUCTION PROCESS

Technology and Equipment

1 ALUMINUM BAR TEST

Each forged aluminum wheel is from one piece of 6061-T6 high-strength aluminum blank. The 6061 aluminum consists of silicon, copper, manganese, magnesium, zinc, ETC. After the Homogenizing the wheel will become denser and stronger.



2 CUTTING

Putting the prepared aluminum bar on cutting machine, According to production requirements cutting them into proportionate ingots.



3 PREHEATING

The furnace can control the temperature uniformity and stability and assurance the quality and rate of the heating. Rough forging temperature directly affects the quality of production, using the device can increase the yield of production and reduce production costs.

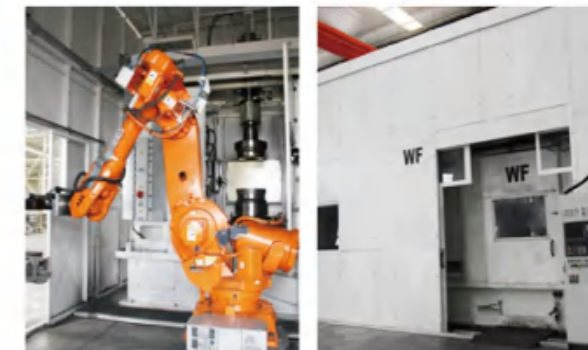


4 FORGING

After three forging, forging blanks are becoming wheel shape, magnesium alloy becomes more precise, uniform, toughness, can greatly increase the strength and resistance to deformation of the wheel

5 SPINNING TENSILE

Putting the molding forging stock on spinning machine spin-shaped rim, not destroy the material to ensure that the arrangement of the grains, while the spin-out of the rim structure, to achieve the best state.



6 HEAT TREATMENT

Adopting German technology, T6 heat treatment furnace, through two T4 and T6 heat treatment steps are to strengthen the dealing and is completed after spinning to make forged aluminum wheels overall mechanical strength of the largest and most stable state.

7 PUNCHING

After the heat treatment of the blank into the CNC automatic lathe cutting, cutting out the various wheel disc faces bits and the R angle as per request. Precision CNC lathe machining, to ensure that each wheel has a high-precision roundness and balance, which greatly reduces the wheel deviation, swing and other issues.



8 POLISHING

Adopting the automatic CNC polishing machine imported from Spain will receive the best surface without corrosion problems.

Products Testing

Every wheel will be tested before shipping, to ensure the quality of wheel.



Rft Test Machine



Cft Test Machine



Impact Test Machine

Product Certifications

Better Holding Group has passed product and system certification as follows.



Forged Aluminum Wheels

Wheel Size inch	Inside Offset mm	Outside Offset mm	Disc Thickness mm	Maximum Loading kg	Bolt Qty	Center Hole mm	P.C.D mm	Vent Hole Dia.	Valve	Weight (KG)	Bolt Diameter Available mm											
17.5*6.0	116.6	135.6	19	1750	6	ø165	222.25	ø 50	TR544D	12.8	ø 21											
						164	222.25				ø 21.5											
				ø140	ø 190	ø 24.5																
	114	133		2500	10	176	225				12.5	ø 26										
				1750	6	ø161	ø 205				13.2	ø 30										
						ø174	ø 222.25				13.7	ø 32										
2500	10	ø176	ø 225	13.2	ø 32R22																	
						13.2	ø 32.5R22															
17.5*6.75	120	141	19	1820	6	ø164	ø 222.25	ø 50	TR544D	14.4	ø 21											
						ø165	222.25				ø 21.5											
				2550	8	ø202	ø 245				14.1	ø 24.5										
						ø221	ø 275				13.9	ø 26										
				3000	10	ø176	ø 225				13.5	ø 30										
											13.8	ø 32										
				13.5	ø 32R22																	
				13.8	ø 32.5																	
				13.8	ø 32.5R22																	
19.5*6.75	120	140	20	2750	8	ø164	ø 222.25	ø 50	70MS-07/ V3-20-1AA	17.6	ø 24.5											
						ø221	ø 275				16.7	ø 26										
							ø 285					ø 32										
				16.8	ø 32R22																	
										16.8	ø 32.5											
										16.8	ø 32.5R22											
19.5*7.5	135	155	20	3000	10	ø176	ø 225	ø 61	70MS-07/ V3-20-1AA	12.8	ø 24.5											
						ø220.1	ø 285.75				13	ø 26										
						ø221	ø 275				13.2	ø 32										
					8	ø164	ø 222.25				13.2	ø 32R22										
													ø221	ø 275	13.2	ø 32.5						
																	13.7	ø 32.5R22				
22.5*7.5	136	159	23	3550	10	ø281.2	ø 335	ø 61	70MS-07	23.6	ø 24.5											
				3450	8	ø220	ø 285.75				25	ø 26										
												ø221	ø 275	25.6	ø 32							
										25.6	ø 32R22											
											25.6	ø 32.5										
											25.6	ø 32.5R22										
22.5*8.25	145	168	23	3650	10	ø281.2	ø 335	ø 61	70MS-07/ V3.20.1AA/ TR545D	25.2	ø 26											
		167.5	22.5			220	285.75		V3.20.1AA/ TR545D		22.4	ø 26R18										
												281.2	335	ø 62	V3.20.1AA/ TR544D	21.5	ø 26.75					
	144.5	168	23.5			24	10	ø281.2	ø 335	ø 61	70MS-07	26.5	ø 32									
													168.5	3835	24	10	ø281.2	ø 335	ø 61	70MS-07	26.5	ø 32.5

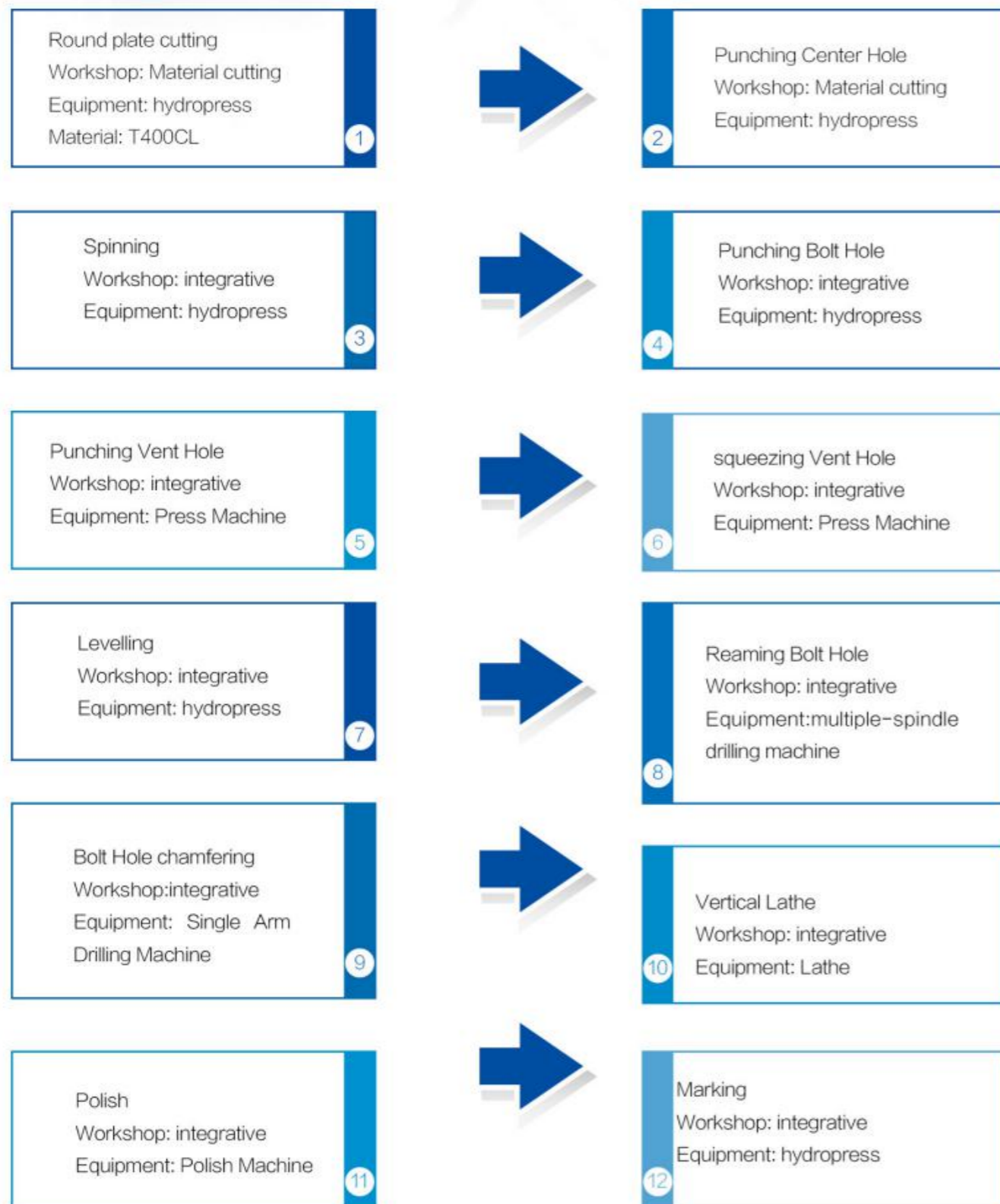
Wheel Size inch	Inside Offset mm	Outside Offset mm	Disc Thickness mm	Maximum Loading kg	Bolt Qty	Center Hole mm	P.C.D mm	Vent Hole Dia.	Valve	Weight (KG)	Bolt Diameter Available mm
22.5*9.0	152	176	24	4125	10	ø281.2	ø335	ø61	70MS-07	26.1	ø26 ø26.75 ø32 ø32.5 ø32.5R22
						ø220	ø285.75			27.7	
						ø221				27.6	
						ø222				27.4	
	151.75	176.75	25	4700	10	ø221	ø275	ø45	V3.20.1AA	27.6	
						ø281.2	ø335			26.6	
						ø281.2	ø335			26.6	
						ø281.2	ø335			26.6	
						ø281.2	ø335			22.2	
						ø281.2	ø335			22.2	
22.5*11.75	0	23	23	4500	10	ø281.2	ø335	ø40	TR543E/ 40MS-00	23.5	
						ø220	ø285.75			25	
	120	143.5	23.5	4750		ø220	ø285.75			26.1	
						ø281.2	335			24.5	
22.5*13	-14	14	28	5300	10	ø220	ø285.75	ø40	TR543E/ 40MS-00	32.2	
						ø221				32.1	
						ø281.2	ø335			30.2	
22.5*14	22	51	29	5810	10	ø220	ø285.75	Steamed Buns Shape	TR543E/ 40MS-00	34.7	
						ø221	ø285.75			34.5	
						ø281.2	ø335			32.9	
24.5*8.25	144	167	23	3650	10	ø220	ø285.75	ø62	TR544D	30.1	
		ø221				ø285.75	30.1				
		166.5				ø220	ø285.75			ø66	26.2

CONQUER ANY ROAD

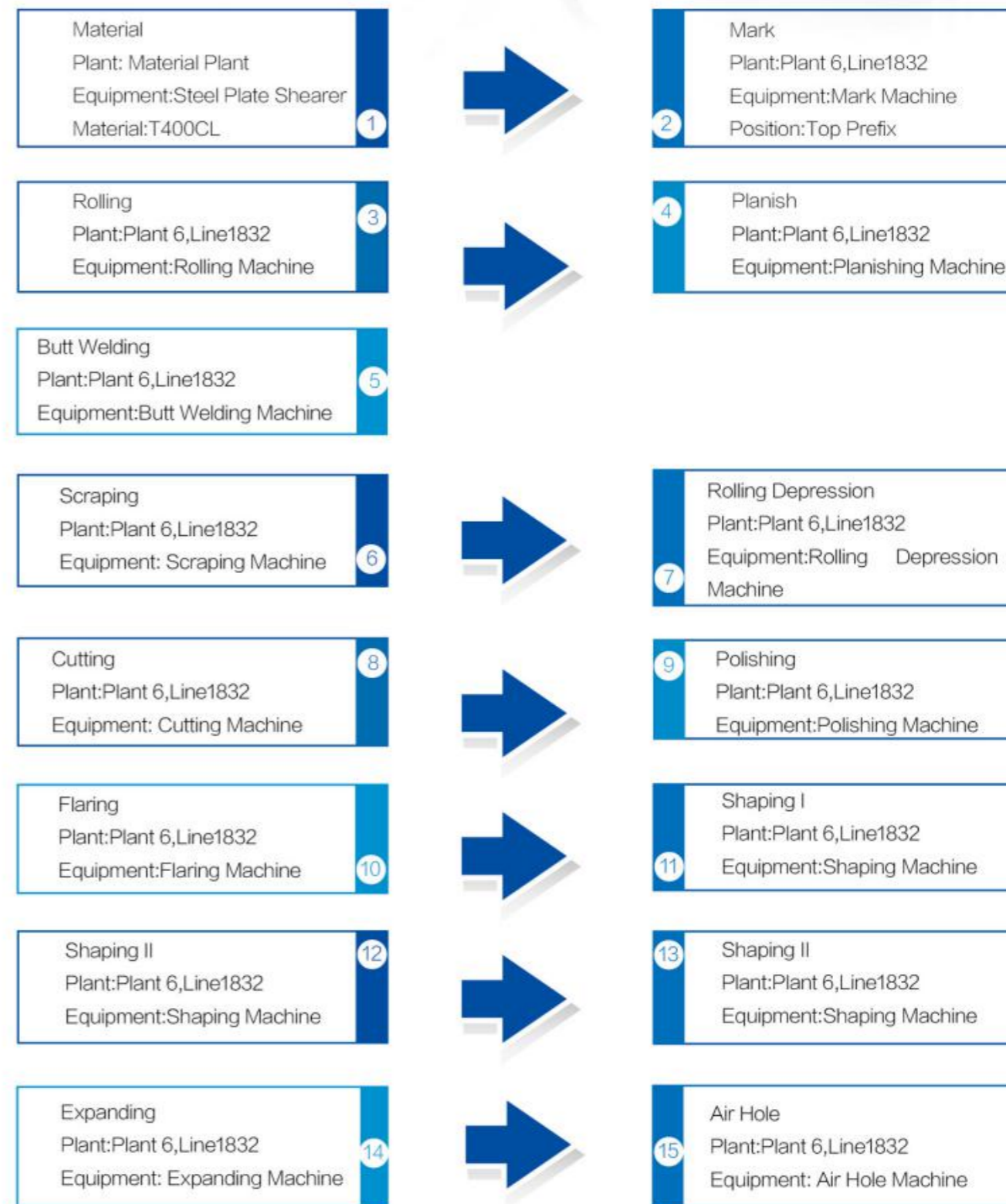
SUPER BEARING...

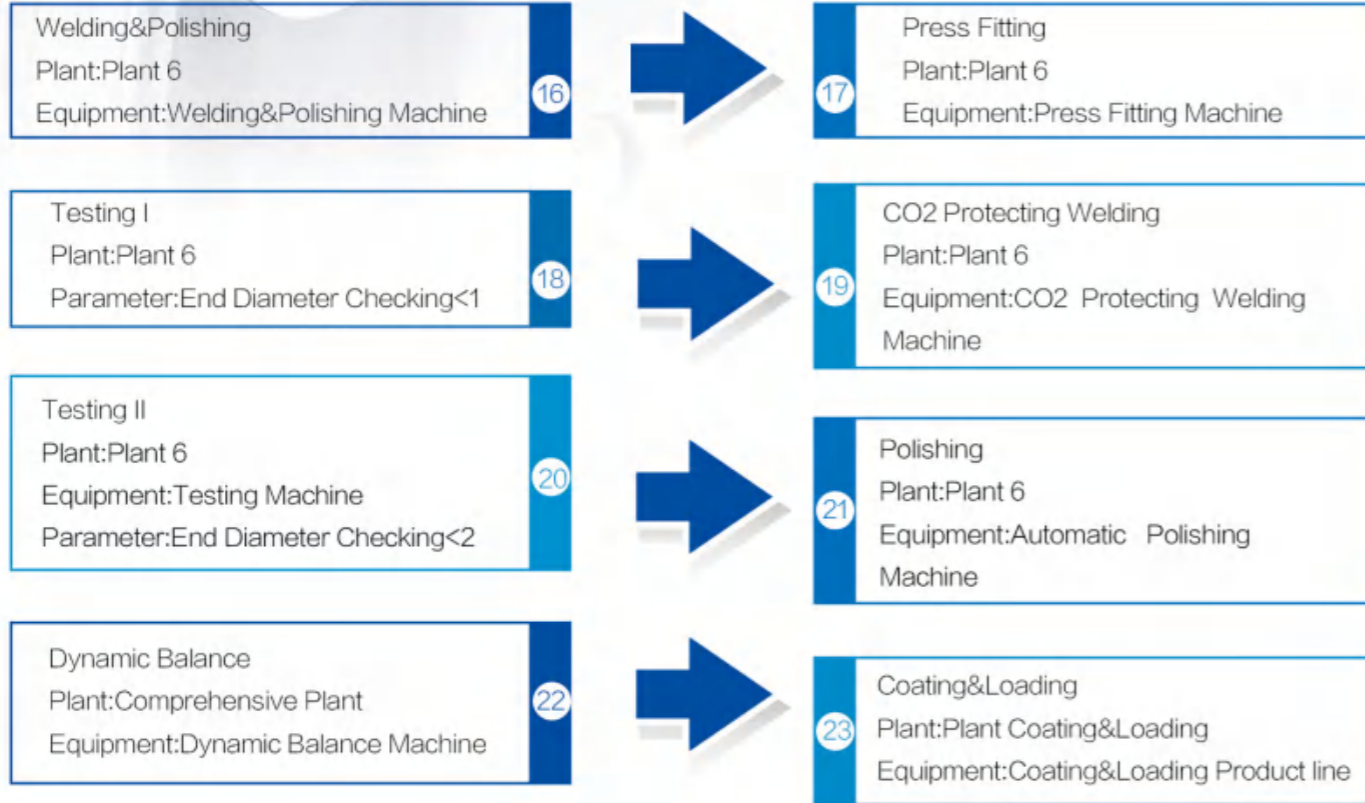


Wheel Disc Process Flow Diagram

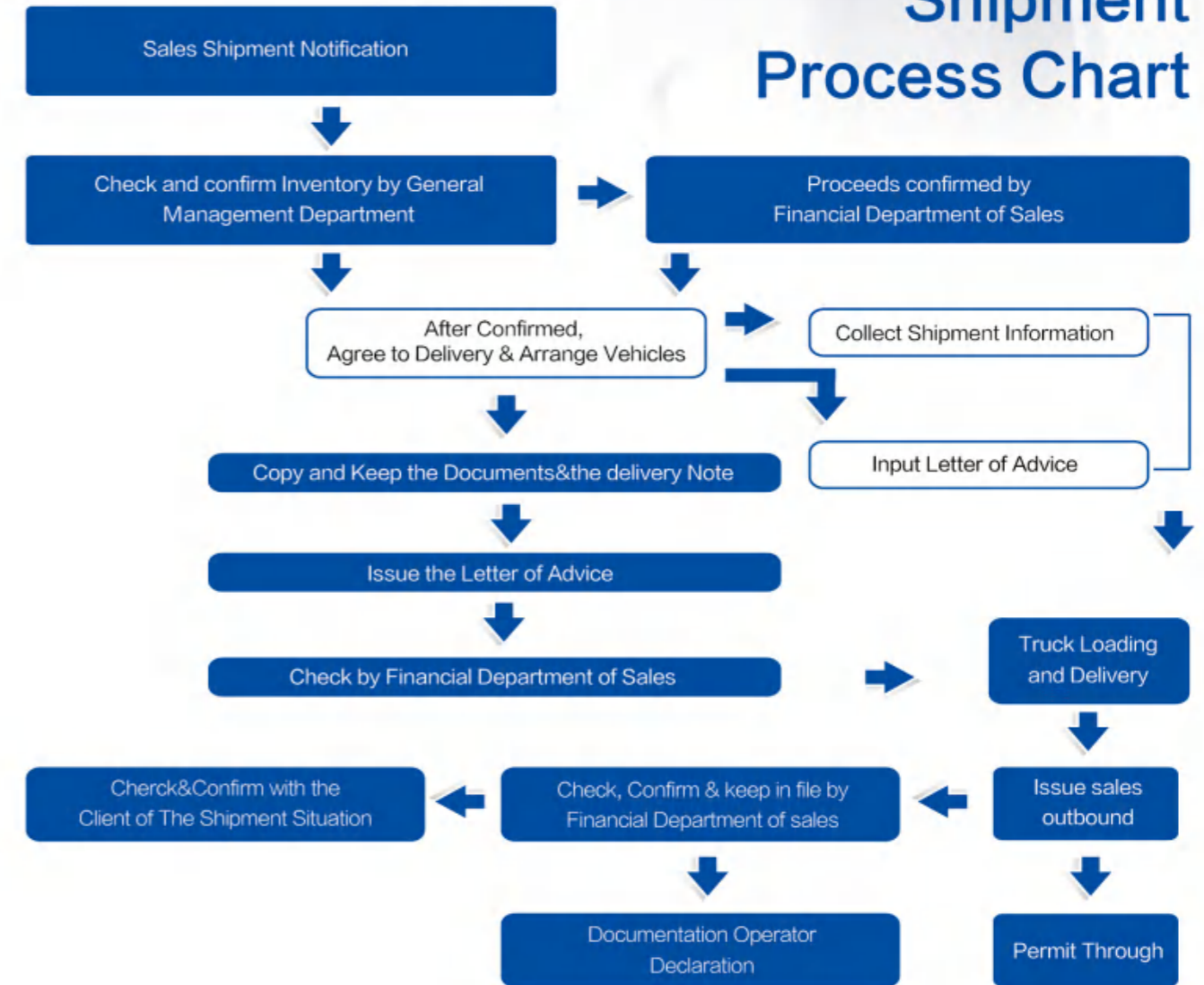


Rim Composition Craft Process Diagram





Shipment Process Chart



Big Tubeless Series

Size	Offset (mm)	Center hole (mm)	P.C.D (mm)	Bolt hole (mm)	Tire
17.5x6.00	135	φ146	φ203.2	5-φ29	8R17.5
17.5x6.00	118	φ146	φ203.2	5-φ29	8R17.5
17.5x6.00	127	φ146	φ203.2	5-φ29	8R17.5
17.5x6.00	128	φ146	φ203.2	5-φ29	8R17.5
17.5x6.00	127	φ161	φ205	6-φ21	8R17.5
17.5x6.00	125	φ161	φ205	6-φ21	8R17.5
17.5x6.00	118	φ161	φ205	6-φ21	8R17.5
17.5x6.00	124	φ161	φ205	6-φ21	8R17.5
17.5x6.00	135	φ164	φ222.25	6-φ32	8R17.5
17.5x6.00	127	φ164	φ222.25	6-φ32	8R17.5
17.5x6.00	118	φ164	φ222.25	6-φ32	8R17.5
17.5x6.00	125	φ164	φ222.25	6-φ32	8R17.5
17.5x6.00	128	φ164	φ222.25	6-φ32	8R17.5
17.5x6.00	125	φ164	φ225	6-φ33	8R17.5
17.5x6.00	125	φ176	φ225	10-φ26	8R17.5
17.5x6.00	135	φ176	φ225	10-φ26	8R17.5
17.5x6.00	123	φ176	φ225	10-φ26	8R17.5
17.5x6.00	120	φ146	φ203.2	5-φ29	8R17.5
17.5x6.00	120	φ150	φ208	5-φ32	8R17.5
17.5x6.00	127	φ150	φ208	5-φ32	8R17.5
17.5x6.00	135	φ150	φ208	5-φ32	8R17.5
17.5x6.00	118	φ150	φ208	5-φ32	8R17.5
17.5x6.00	127	φ161	φ222.25	6-φ24	8R17.5
17.5x6.00	127	φ160	φ205	6-φ21	8R17.5
17.5x6.00	118	φ146	φ203.2	5-φ32	8R17.5
17.5x6.00	127	φ146	φ203.2	5-φ32	8R17.5
17.5x6.00	135	φ146	φ203.2	5-φ32	8R17.5
17.5x6.00	134	φ221	φ275	8-φ26	8R17.5
17.5x6.00	135	φ221	φ275	8-φ24	8R17.5
17.5x6.75	138	φ161	φ205	6-φ21	9R17.5
17.5x6.75	132	φ161	φ205	6-φ21	9R17.5
17.5x6.75	127	φ164	φ222.25	6-φ32	9R17.5
17.5x6.75	140	φ164	φ222.25	6-φ32	9R17.5
17.5x6.75	131	φ164	φ222.25	6-φ32	9R17.5
17.5x6.75	137	φ164	φ222.25	6-φ32	9R17.5
17.5x6.75	142	φ176	φ225	10-φ26	9R17.5
17.5x6.75	153	φ176	φ225	10-φ26	9R17.5
17.5x6.75	145	φ176	φ225	10-φ26	9R17.5

Size	Offset (mm)	Center hole (mm)	P.C.D (mm)	Bolt hole (mm)	Tire
17.5x6.75	135	φ176	φ225	10-φ26	9R17.5
17.5x6.75	132	φ221	φ275	8-φ21.5	9R17.5
17.5x6.75	143	φ221	φ275	8-φ26	9R17.5
17.5x6.75	140	φ221	φ275	8-φ26	9R17.5
17.5x6.75	127	φ146	φ203.2	5-φ29	9R17.5
17.5x6.75	138	φ221	φ275	8-φ27	9R17.5
17.5x6.75	142	φ221	φ275	8-φ26	9R17.5
17.5x6.75	150	φ176	φ225	10-φ27	9R17.5
17.5x5.25	126	φ161	φ205	6-φ21	205/75R17.5
17.5x5.25	118	φ146	φ203.2	5-φ29	205/75R17.5
17.5x5.25	127	φ146	φ203.2	5-φ29	205/75R17.5
17.5x5.25	118	φ146	φ203.2	5-φ32	205/75R17.5
17.5x5.25	115	φ150	φ208	5-φ32	205/75R17.5
17.5x5.25	120	φ176	φ225	10-φ26	205/75R17.5

Size	Offset (mm)	Center hole (mm)	P.C.D (mm)	Bolt hole (mm)	Tire
19.5x6.00	135	φ164	φ222.25	6-φ32	8R19.5
19.5x6.00	135	φ221	φ275	8-φ24	8R19.5
19.5x6.75	145	φ164	φ222.25	6-φ32	9R19.5
19.5x6.75	140	φ164	φ222.25	6-φ32	9R19.5
19.5x6.75	145	φ164	φ222.25	6-φ24	9R19.5
19.5x6.75	145	φ221	φ275	8-φ24	9R19.5
19.5x6.75	140	φ221	φ275	8-φ24	9R19.5
19.5x6.75	140	φ221	φ285	8-φ32	9R19.5
19.5x6.75	145	φ221	φ285	8-φ32	9R19.5
19.5x6.75	140	φ214	φ275	8-φ32	9R19.5
19.5x6.75	135	φ214	φ275	8-φ32	9R19.5
19.5x6.75	145	φ176	φ225	10-φ26	9R19.5
19.5x6.75	145	φ221	φ275	8-φ26	9R19.5
19.5x6.75	145	φ221	φ275	8-φ27	9R19.5
19.5x6.75	145	φ176	φ225	10-φ27	9R19.5
19.5x7.50	152	φ221	φ275	8-φ24	10R19.5
19.5x7.50	146	φ221	φ275	8-φ24	10R19.5
19.5x7.50	152	φ221	φ275	8-φ26	10R19.5
19.5x7.50	152	φ164	φ222.25	6-φ32	10R19.5
19.5x7.50	152	φ165	φ222.25	6-φ32	10R19.5
19.5x7.50	152	φ176	φ225	10-φ26	10R19.5
19.5x7.50	155	φ176	φ225	10-φ26	10R19.5

Size	Offset (mm)	Center hole (mm)	P.C.D (mm)	Bolt hole (mm)	Tire
19.5x7.50	156	φ176	φ225	10-φ26	10R19.5
19.5x7.50	146	φ176	φ225	10-φ27	10R19.5
19.5x7.50	151	φ176	φ225	10-φ27	10R19.5
19.5x7.50	150	φ221	φ275	8-φ27	10R19.5
19.5x7.50	145	φ214	φ275	8-φ32	10R19.5
19.5x8.25	165	φ176	φ225	10-φ26	11R19.5
19.5x8.25	160	φ176	φ225	10-φ26	11R19.5
19.5x8.25	146.5	φ176	φ225	10-φ26	11R19.5
19.5x8.25	165	φ221	φ275	8-φ24	11R19.5
19.5x8.25	165	φ221	φ275	8-φ26	11R19.5
19.5x8.25	160	φ221	φ275	8-φ26	11R19.5
19.5x8.25	100	φ151	φ208	5-φ32	11R19.5
19.5x8.25	100	φ164	φ222.25	6-φ32	11R19.5
19.5x8.25	74	φ164	φ222.25	6-φ32	11R19.5
19.5x8.25	10	φ221	φ275	8-φ21.5	11R19.5
19.5x8.25	10	φ161	φ205	6-φ21.5	11R19.5
19.5x14.00	0	φ221	φ275	8-φ26	18R19.5
19.5x14.00	5	φ221	φ275	8-φ26	18R19.5
19.5x14.00	0	φ281	φ335	10-φ26	18R19.5
19.5x14.00	120	φ281	φ335	10-φ26	18R19.5
19.5x14.00	0	φ281	φ335	10-φ27	18R19.5
19.5x14.00	120	φ281	φ335	10-φ27	18R19.5
19.5x14.00	0	φ221	φ275	8-φ21.5	18R19.5

Size	Offset (mm)	Center hole (mm)	P.C.D (mm)	Bolt hole (mm)	Tire
22.5x6.75	145	φ221	φ275	8-φ24	9R22.5
22.5x6.75	153	φ221	φ275	8-φ24	9R22.5
22.5x6.75	145	φ221	φ275	8-φ26	9R22.5
22.5x6.75	145	φ221	φ275	8-φ27	9R22.5
22.5x6.75	147	φ214	φ275	8-φ32	9R22.5
22.5x6.75	145	φ214	φ275	8-φ32	9R22.5
22.5x6.75	152	φ214	φ275	8-φ32	9R22.5
22.5x6.75	145	φ221	φ285	8-φ32	9R22.5
22.5x6.75	142	φ221	φ285	8-φ32	9R22.5
22.5x6.75	150	φ221	φ285	8-φ32	9R22.5
22.5x6.75	152	φ221	φ285	8-φ32	9R22.5
22.5x6.75	145	φ220	φ285.75	10-φ26	9R22.5
22.5x6.75	145	φ222	φ285.75	10-φ32	9R22.5
22.5x6.75	145	φ281	φ335	10-φ26	9R22.5
22.5x6.75	153	φ281	φ335	10-φ26	9R22.5
22.5x6.75	145	φ281	φ335	10-φ27	9R22.5
22.5x6.75	145	φ176	φ225	10-φ26	9R22.5
22.5x7.50	153	φ221	φ275	8-φ24	10R22.5
22.5x7.50	165	φ221	φ275	8-φ24	10R22.5
22.5x7.50	160	φ221	φ275	8-φ24	10R22.5
22.5x7.50	153	φ214	φ275	8-φ32	10R22.5
22.5x7.50	140	φ214	φ275	8-φ32	10R22.5
22.5x7.50	145	φ214	φ275	8-φ32	10R22.5
22.5x7.50	165	φ214	φ275	8-φ32	10R22.5
22.5x7.50	153	φ221	φ285	8-φ32	10R22.5
22.5x7.50	165	φ221	φ285	8-φ32	10R22.5
22.5x7.50	162	φ221	φ285	8-φ32	10R22.5
22.5x7.50	153	φ220	φ285.75	10-φ26	10R22.5
22.5x7.50	152	φ221	φ285.75	10-φ26	10R22.5
22.5x7.50	165	φ220	φ285.75	10-φ26	10R22.5
22.5x7.50	153	φ222	φ285.75	10-φ32	10R22.5
22.5x7.50	165	φ222	φ285.75	10-φ32	10R22.5
22.5x7.50	153	φ281	φ335	10-φ26	10R22.5
22.5x7.50	162	φ281	φ335	10-φ26	10R22.5
22.5x7.50	160	φ281	φ335	10-φ26	10R22.5
22.5x7.50	153	φ281	φ335	10-φ27	10R22.5
22.5x7.50	165	φ221	φ275	8-φ26	10R22.5
22.5x7.50	153	φ221	φ275	8-φ26	10R22.5
22.5x7.50	153	φ221	φ275	8-φ27	10R22.5



Size	Offset (mm)	Center hole (mm)	P.C.D (mm)	Bolt hole (mm)	Tire
22.5x7.50	158	φ 221	φ 275	8- φ 27	10R22.5
22.5x7.50	165	φ 281	φ 335	10- φ 26	10R22.5
22.5x7.50	165	φ 281	φ 335	10- φ 27	10R22.5
22.5x8.25	169	φ 221	φ 275	8- φ 24	11R22.5
22.5x8.25	165	φ 221	φ 275	8- φ 24	11R22.5
22.5x8.25	160	φ 221	φ 275	8- φ 24	11R22.5
22.5x8.25	169	φ 221	φ 275	8- φ 27	11R22.5
22.5x8.25	160	φ 214	φ 275	8- φ 32	11R22.5
22.5x8.25	169	φ 214	φ 275	8- φ 32	11R22.5
22.5x8.25	169	φ 221	φ 285	8- φ 32	11R22.5
22.5x8.25	165	φ 221	φ 285	8- φ 32	11R22.5
22.5x8.25	150	φ 221	φ 285	8- φ 32	11R22.5
22.5x8.25	169	φ 220	φ 285.75	10- φ 26	11R22.5
22.5x8.25	168	φ 220	φ 285.75	10- φ 26	11R22.5
22.5x8.25	165	φ 220	φ 285.75	10- φ 26	11R22.5
22.5x8.25	168	φ 221	φ 285.75	10- φ 26	11R22.5
22.5x8.25	169	φ 222	φ 285.75	10- φ 32	11R22.5
22.5x8.25	160	φ 222	φ 285.75	10- φ 32	11R22.5
22.5x8.25	165	φ 222	φ 285.75	10- φ 32	11R22.5
22.5x8.25	168	φ 222	φ 285.75	10- φ 32	11R22.5
22.5x8.25	168	φ 221	φ 285.75	10- φ 32	11R22.5
22.5x8.25	158	φ 222	φ 285.75	10- φ 32	11R22.5
22.5x8.25	170	φ 281	φ 335	10- φ 26	11R22.5
22.5x8.25	171	φ 281	φ 335	10- φ 26	11R22.5
22.5x8.25	165	φ 281	φ 335	10- φ 26	11R22.5
22.5x8.25	169	φ 281	φ 335	10- φ 26	11R22.5
22.5x8.25	169	φ 281	φ 335	10- φ 27	11R22.5
22.5x8.25	165	φ 281	φ 335	10- φ 27	11R22.5
22.5x8.25	171	φ 220	φ 285.75	10- φ 26	11R22.5
22.5x8.25	171	φ 222	φ 285.75	10- φ 32	11R22.5
22.5x8.25	171	φ 220	φ 285.75	10- φ 32	11R22.5
22.5x8.25	168	φ 281	φ 335	10- φ 26	11R22.5
22.5x8.25	168	φ 281	φ 335	10- φ 27	11R22.5
22.5x8.25	169	φ 221	φ 275	8- φ 26	11R22.5
22.5x8.25	165	φ 221	φ 275	8- φ 26	11R22.5
22.5x8.25	160	φ 221	φ 275	8- φ 26.5	11R22.5
22.5x8.25	162	φ 281	φ 335	10- φ 26	11R22.5
22.5x8.25	38	φ 152.4	φ 203.2	8- φ 16.5	11R22.5
22.5x8.25	28.5	φ 117.7	φ 152.4	6- φ 14.7	11R22.5

Size	Offset (mm)	Center hole (mm)	P.C.D (mm)	Bolt hole (mm)	Tire
22.5x9.00	175	φ 221	φ 275	8- φ 24	12R22.5
22.5x9.00	175	φ 214	φ 275	8- φ 32	12R22.5
22.5x9.00	175	φ 221	φ 285	8- φ 32	12R22.5
22.5x9.00	150	φ 221	φ 285	8- φ 32	12R22.5
22.5x9.00	160	φ 221	φ 285	8- φ 32	12R22.5
22.5x9.00	175	φ 221	φ 285.75	10- φ 26	12R22.5
22.5x9.00	175	φ 220	φ 285.75	10- φ 26	12R22.5
22.5x9.00	175	φ 222	φ 285.75	10- φ 32	12R22.5
22.5x9.00	177	φ 222	φ 285.75	10- φ 32	12R22.5
22.5x9.00	158	φ 222	φ 285.75	10- φ 32	12R22.5
22.5x9.00	175	φ 281.1	φ 335	10- φ 26	12R22.5
22.5x9.00	172	φ 281	φ 335	10- φ 26	12R22.5
22.5x9.00	170	φ 281	φ 335	10- φ 26	12R22.5
22.5x9.00	168	φ 281	φ 335	10- φ 26	12R22.5
22.5x9.00	169	φ 281	φ 335	10- φ 26	12R22.5
22.5x9.00	150	φ 281	φ 335	10- φ 27	12R22.5
22.5x9.00	180	φ 281	φ 335	10- φ 27	12R22.5
22.5x9.00	175	φ 281	φ 335	10- φ 26	12R22.5
22.5x9.00	175	φ 281	φ 335	10- φ 27	12R22.5
22.5x9.00	0	φ 281	φ 335	10- φ 26	12R22.5
22.5x9.00	125	φ 281	φ 335	10- φ 26	12R22.5
22.5x9.00	104	φ 281	φ 335	10- φ 26	12R22.5
22.5x9.00	30	φ 281	φ 335	10- φ 26	12R22.5
22.5x9.00	180	φ 281	φ 335	10- φ 26	12R22.5
22.5x9.00	0	φ 222	φ 275	8- φ 21.5	12R22.5
22.5x9.00	0	φ 281	φ 335	10- φ 27	12R22.5
22.5x9.00	0	φ 221	φ 275	8- φ 26	12R22.5
22.5x9.00	125	φ 281	φ 335	10- φ 27	12R22.5
22.5x9.75	185	φ 281	φ 335	10- φ 26	13R22.5
22.5x9.75	125	φ 281	φ 335	10- φ 26	13R22.5
22.5x9.75	175	φ 281	φ 335	10- φ 26	13R22.5
22.5x9.75	180	φ 281	φ 335	10- φ 26	13R22.5
22.5x9.75	180	φ 220	φ 285.75	10- φ 26	13R22.5
22.5x9.75	80	φ 221	φ 275	8- φ 26	13R22.5
22.5x11.75	0	φ 281	φ 335	10- φ 26	385/65R22.5
22.5x11.75	135	φ 281	φ 335	10- φ 26	385/65R22.5
22.5x11.75	130	φ 281	φ 335	10- φ 26	385/65R22.5
22.5x11.75	120	φ 281	φ 335	10- φ 27	385/65R22.5
22.5x11.75	0	φ 281	φ 335	10- φ 27	385/65R22.5

Size	Offset (mm)	Center hole (mm)	P.C.D (mm)	Bolt hole (mm)	Tire
22.5x11.75	120	φ 281	φ 335	10-φ 26	385/65R22.5
22.5x11.75	79	φ 281	φ 335	10-φ 26	385/65R22.5
22.5x11.75	134	φ 281	φ 335	10-φ 26	385/65R22.5
22.5x11.75	120	φ 220	φ 285.75	10-φ 26	385/65R22.5
22.5x11.75	120	φ 221	φ 285	8-φ 32	385/65R22.5
22.5x11.75	0	φ 221	φ 285	8-φ 32	385/65R22.5
22.5x11.75	0	φ 221	φ 275	8-φ 24	385/65R22.5
22.5x11.75	0	φ 221	φ 275	8-φ 26	385/65R22.5
22.5x11.75	120	φ 221	φ 275	8-φ 26	385/65R22.5
22.5x11.75	0	φ 221	φ 275	8-φ 27	385/65R22.5
22.5x11.75	0	φ 221	φ 275	8-φ 26.5	385/65R22.5
22.5x11.75	0	φ 221	φ 275	8-φ 21.5	385/65R22.5
22.5x11.75	80	φ 221	φ 275	8-φ 26	385/65R22.5
22.5x11.75	28.5	φ 152.4	φ 203.2	8-φ 16.5	385/65R22.5
22.5x13.00	75	φ 281	φ 335	10-φ 26	425/65R22.5
22.5x13.00	0	φ 281	φ 335	10-φ 26	425/65R22.5
22.5x13.00	120	φ 281	φ 335	10-φ 26	425/65R22.5
22.5x13.00	12	φ 281	φ 335	10-φ 26	425/65R22.5
22.5x13.00	0	φ 281	φ 335	10-φ 27	425/65R22.5
22.5x13.00	8	φ 152.7	φ 203.2	8-φ 20.6	425/65R22.5
22.5x13.00	0	φ 223.2	φ 285.75	10-φ 20.6	425/65R22.5
22.5x14.00	0	φ 281	φ 335	10-φ 26	445/65R22.5
22.5x14.00	120	φ 281	φ 335	10-φ 26	445/65R22.5
22.5x14.00	0	φ 281	φ 335	10-φ 27	445/65R22.5
22.5x14.00	120	φ 281	φ 335	10-φ 27	445/65R22.5
22.5x14.00	0	φ 221	φ 275	8-φ 26	445/65R22.5
22.5x14.00	180	φ 281	φ 335	10-φ 27	445/65R22.5
22.5x14.00	0	φ 221	φ 275	8-φ 21.5	445/65R22.5



Size	Rim Thickness (mm)	Offset (mm)	Rim Weight (kg)	Note	Tire
22.5x7.50	7	110	31.5	America type	10R22.5
22.5x7.50	6	110		America type	10R22.5
22.5x7.50	7	115	31.5	America type	10R22.5
22.5x8.25	7	116	33.92	Euro type	11R22.5
22.5x8.25	7	120	34.52	Austrilia type	11R22.5
22.5x8.25	7	120	33.72	America type	11R22.5
22.5x8.25	6	120	31	America type	11R22.5
22.5x9.00	7	116	35.6	Euro type	12R22.5
22.5x9.00	7	130	36.2	America type	12R22.5
22.5x9.00	6	130		America type	12R22.5
24.5x9.00	7	127	45.42	Paraguay type	12R24.5

Size	Offset (mm)	Center hole (mm)	P.C.D (mm)	Bolt hole (mm)	Tire
24.5x8.25	169	φ 281	φ 335	10-φ 26	11R24.5
24.5x8.25	169	φ 281	φ 335	10-φ 27	11R24.5
24.5x8.25	169	φ 222	φ 285.75	10-φ 32	11R24.5
24.5x8.25	168	φ 222	φ 285.75	10-φ 32	11R24.5
24.5x8.25	169	φ 221	φ 285.75	10-φ 32	11R24.5
24.5x9.00	175	φ 281	φ 335	10-φ 26	12R24.5
24.5x9.00	175	φ 281	φ 335	10-φ 27	12R24.5
24.5x8.25	168	φ 220	φ 285.75	10-φ 26	11R24.5

Small Tubeless Series

Size	Offset (mm)	Center hole (mm)	P.C.D (mm)	Bolt hole (mm)	Tire
13x4.5J	98	φ115	φ160	6-φ15	
13x5J	45	φ110	φ139.7	5-φ15	
14x4.5J	98	φ115	φ160	6-φ15	6.00-14
14x4.5J	98	φ110	φ160	6-φ15	6.00-14
14x4.5J	99	φ110	φ160	6-φ17	
5.5Jx16	115	φ140	φ190	6-φ21	7.00R16
5.5Jx16	108	φ140	φ190	6-φ21	195/75R16
5.5Jx16	115	φ164	φ222.25	6-φ32	7.00R16
5.5Jx16	127	φ164	φ222.25	6-φ32	7.00R16
5.5Jx16	127	φ165	φ222.25	6-φ32	7.00R16
5.5Jx16	116	φ164	φ222.25	6-φ32	205/75R16
5.5Jx16	123	φ164	φ222.25	6-φ32	215/80R16
5.5Jx16	122	φ164	φ222.25	6-φ32	7.00R16
5.5Jx16	127	φ146	φ203.2	5-φ29	7.00R16
5.5Jx16	119	φ150	φ208	5-φ32	7.00R16
5.5Jx16	116	φ150	φ208	5-φ32	7.00R16
5.5Jx16	127	φ164	φ222.25	6-φ24	7.00R16
5.5Jx16	106	φ130	φ170	6-φ21	
5.5Jx16	127	φ146	φ203.2	5-φ32	215/75R16
5.5Jx16	127	φ146	φ203.2	5-φ29	
5.5Jx16	119	φ146	φ203.2	5-φ29	
5.5Jx16	118	φ146	φ203.2	5-φ29	
5.5Jx16	127	φ165	φ222.25	6-φ32	
5.5Jx16	127	φ161	φ205	6-φ21	215/75R16
5.5Jx16	105	φ130	φ170	6-φ21	
5.5Jx16	115	φ140	φ190	6-φ21	
6Jx15	15	φ110	φ140	5-φ15	
6Jx15	115	φ140	φ190	6-φ20	195/70R15
6Jx16	125	φ165	φ222.25	6-φ32	225/80R16
6Jx16	127	φ150	φ208	5-φ32	225/80R16

Tube Series

Size	Offset (mm)	Center hole (mm)	P.C.D (mm)	Bolt hole (mm)	Tire
5.5F-16	108	φ140	φ190	6-φ20.5	7.00-16
5.5F-16	115	φ146	φ203.2	5-φ29	7.00-16
5.5F-16	118	φ146	φ203.2	5-φ29	7.00-16
5.5F-16	129	φ161	φ222.25	6-φ26	7.00-16
7.50V-20	165	φ281	φ335	10-φ26	10.00-20
7.50V-20	165	φ222	φ285.75	10-φ32	10.00-20
8.00V-20	175	φ281	φ335	10-φ26	11.00-20
8.00V-20	172	φ281	φ335	10-φ26	11.00-20
8.00V-20	170	φ281	φ335	10-φ26	11.00-20
8.00V-20	175	φ222	φ285.75	10-φ32	11.00-20
8.00V-20	175	φ281	φ335	10-φ27	11.00-20
8.00V-20	170	φ281	φ335	10-φ27	11.00-20
8.5-20	175	φ281	φ335	10-φ26	12.00-20
8.5-20	180	φ281	φ335	10-φ26	12.00-20
8.5-20	177	φ281	φ335	10-φ26	12.00-20
8.5-20	183	φ281	φ335	10-φ26	12.00-20
8.5-20	180	φ281	φ335	10-φ27	12.00-20
8.8-20	180	φ281	φ335	10-φ26	12.00-20
8.8-20	183	φ281	φ335	10-φ26	12.00-20
8.5-24	177	φ281	φ335	10-φ26	12.00-24
8.5-24	172	φ281	φ335	10-φ26	12.00-24
8.5-24	180	φ281	φ335	10-φ26	12.00-24
8.5-24	175	φ281	φ335	10-φ26	12.00-24
8.5-24	180	φ281	φ335	10-φ27	12.00-24



Agriculture , forestry and engineering machinery series

Size	Offset (mm)	Center hole (mm)	P.C.D (mm)	Bolt hole (mm)
3.00Dx14	0	φ110	φ140	5-φ15
3.00Dx14	10.5	φ110	φ140	5-φ15
3.00Dx14	20	φ74	φ110	4-φ15
3.00Dx16	12	φ110	φ140	5-φ15
3.00Dx16	28	φ74	φ110	4-φ15
3.00Dx16	28	φ110	φ140	5-φ15
4.5Jx14	8	φ110	φ139.7	5-φ15
4.5Jx14	15	φ110	φ139.7	5-φ15
4.5Jx14	12	φ110	φ139.7	5-φ15
4.5Jx14	0	φ110	φ139.7	5-φ15
4.00Ex15	0	φ92	φ127	4-φ15
4.00Ex15	15	φ110	φ152	4-φ20
4.00Ex15	25	φ110	φ152	4-φ20
4.00Ex15	10	φ92.2	φ127	4-φ17
4.00Ex15	15	φ110	φ139.7	5-φ15
15.3x9.00	0	φ158	φ205	5-φ17
4.00Ex16	0	φ110	φ140	5-φ15
4.00Ex16	10	φ110	φ140	5-φ15
4.00Ex16	12	φ110	φ140	5-φ15
4.00Ex16	25	φ110	φ152	4-φ20
4.00Ex16	12	φ110	φ152	4-φ20
4.50Ex16	15	φ140.4	φ190	6-φ20
4.50Ex16	58	φ96	φ140	5-φ15
4.50Ex16	50	φ96	φ140	5-φ15
4.50Ex16	30	φ140	φ190	6-φ15
4.50Ex16	30	φ110	φ140	6-φ12
4.50Ex16	21	φ110	φ152.4	4-φ20
4.50Ex16	52	φ102	φ161	6-φ19
4.50Ex16	15	φ102	φ161	6-φ19
4.50Ex16	0	φ110	φ140	6-φ13
4.50Ex16	21	φ96	φ140	5-φ15
4.50Ex16	16	φ96	φ140	5-φ15
4.50Ex16	15	φ110	φ139.7	5-φ15
4.50Ex16	16	φ112.5	φ152.4	6-φ20
8LBx16	0	φ161	φ205	6-φ21
8LBx16	0	φ140	φ190	6-φ20
5.00Fx16	80	φ110	φ152.4	6-φ20
5.00Fx16	80	φ110	φ140	5-φ15
5.00Fx16	25	φ110	φ152.4	6-φ20
5.00Fx16	60	φ96	φ140	5-φ15

Size	Offset (mm)	Center hole (mm)	P.C.D (mm)	Bolt hole (mm)
5.5Fx16	0	φ140	φ190	6-φ15
5.5Fx16	25	φ141	φ180	6-φ17
5.5Fx16	50	φ96	φ140	5-φ15
5.5Fx16	50	φ102	φ161	6-φ19
5.5Fx16	12	φ110	φ139.7	5-φ15
8LBx16	0	φ110	φ139.7	5-φ15
W7x20	28	φ141	φ180	6-φ17
W7x20	48	φ141	φ180	6-φ17
W7x20	50	φ102	φ161	6-φ19
W7x24	28	φ141	φ180	6-φ17
W7x24	53.5	φ141	φ180	6-φ17
W7x24	15	φ141	φ180	6-φ17
W7x24	48	φ141	φ180	6-φ17
W7x24	76	φ141	φ180	6-φ17
W8x24	39	φ141	φ180	6-φ17
W8x24	25	φ141	φ180	6-φ17
W8x24	25	φ141	φ180	6-φ17
W8x24	84	φ141	φ180	6-φ17
W8x24	18	φ141	φ180	6-φ17
W8x24	30	φ141	φ180	6-φ17
W8x24	15	φ120	φ165	6-φ20
W8x24	65	φ120	φ165	6-φ20
W8x24	45	φ141	φ180	6-φ17
W8x24	10	φ130	φ165	6-φ15
W9x24	30	φ141	φ180	6-φ17
W9x24	76	φ141	φ180	6-φ17
W10x24	22	φ141	φ180	6-φ17
W10x24	18	φ141	φ180	6-φ17
W10x24	15	φ120	φ165	6-φ20
W10x24	65	φ120	φ165	6-φ20
W10x24	69	φ120	φ165	6-φ20
W10x24	50	φ120	φ165	6-φ18.8
W10x24	0	φ120	φ165	6-φ18.8
W10x24	81.5	φ290.5	φ330	8-φ17
W10x24	52	φ141	φ180	6-φ17
W10x24	35	φ152.4	φ203.2	8-φ17
W12x24	7	φ290.5	φ330	8-φ17
W12x24	60	φ290.5	φ330	8-φ17
W12x24	10	φ140	φ210	8-φ21
W12x24	70	φ140	φ210	8-φ21

Size	Offset (mm)	Center hole (mm)	P.C.D (mm)	Bolt hole (mm)
W12x24	50	φ140	φ210	8-φ21
W11x26	102	φ290.5	φ330	8-φ16.5
W13x26	5	φ290.5	φ330	8-φ16.5
W13x26	17.5	φ290.5	φ330	8-φ16.5
W10x28	69	φ152.6	φ203.2	8-φ18.8
W10x28	48.5	φ152.6	φ203.2	8-φ18.8
W10x28	4	φ152.6	φ203.2	8-φ18.8
W10x28	65	φ120	φ165	6-φ18.8
W10x28	4	φ120	φ165	6-φ18.8
W10x28	48.5	φ120	φ165	6-φ18.8
W10x28	52.5	φ290.5	φ330	8-φ16.5
W11x28	69	φ152.6	φ203.2	8-φ18.8
W12x30	25.4	φ152.4	φ203.2	8-φ21
W12x30	20	φ152.4	φ203.2	8-φ21
W15x30	20	φ152.4	φ203.2	8-φ21
W15x34	70	φ150	φ203.2	8-φ18.8
W15x34	12	φ152.4	φ203.2	8-φ21
W15x34	45	φ220.5	φ280	8-φ23
W15x34	55	φ220.5	φ280	8-φ23
W15x34	50	φ220.5	φ280	8-φ23
W12x38	112	φ150	φ203.2	8-φ18.8
W12x38	12	φ152.4	φ203.2	8-φ21
W15x38	119	φ150	φ203.2	8-φ18.8

ROLLING WITH SUPER BEARING...

